



Title Plan - LT 548207

Survey Number LT 548207
Surveyor Reference Arran Hill Stage 2 - 37502
Surveyor Kendall Lisa Reid
Survey Firm Wood & Partners Consultants Ltd
Surveyor Declaration

Survey Details

Dataset Description Lots 79-142, 501-502, 700, 800-801 & 901 Being a subdivision of Lot 1001 DP 542496
Status Initiated
Land District North Auckland
Submitted Date
Survey Class Class A
Survey Approval Date
Deposit Date

Territorial Authorities

Auckland Council

Comprised In

RT 917193

Created Parcels

Parcels	Parcel Intent	Area	RT Reference
Lot 79 Deposited Plan 548207	Fee Simple Title	0.0656 Ha	951846
Lot 80 Deposited Plan 548207	Fee Simple Title	0.0651 Ha	951847
Lot 81 Deposited Plan 548207	Fee Simple Title	0.0650 Ha	951848
Lot 82 Deposited Plan 548207	Fee Simple Title	0.0650 Ha	951849
Lot 83 Deposited Plan 548207	Fee Simple Title	0.0650 Ha	951850
Lot 84 Deposited Plan 548207	Fee Simple Title	0.0709 Ha	951851
Lot 85 Deposited Plan 548207	Fee Simple Title	0.0671 Ha	951852
Lot 86 Deposited Plan 548207	Fee Simple Title	0.0557 Ha	951853
Lot 87 Deposited Plan 548207	Fee Simple Title	0.0525 Ha	951854
Lot 88 Deposited Plan 548207	Fee Simple Title	0.0525 Ha	951855
Lot 89 Deposited Plan 548207	Fee Simple Title	0.0525 Ha	951856
Lot 90 Deposited Plan 548207	Fee Simple Title	0.0525 Ha	951857
Lot 91 Deposited Plan 548207	Fee Simple Title	0.0525 Ha	951858
Lot 92 Deposited Plan 548207	Fee Simple Title	0.0525 Ha	951859
Lot 93 Deposited Plan 548207	Fee Simple Title	0.0525 Ha	951860
Lot 94 Deposited Plan 548207	Fee Simple Title	0.0525 Ha	951861
Lot 95 Deposited Plan 548207	Fee Simple Title	0.0525 Ha	951862
Lot 96 Deposited Plan 548207	Fee Simple Title	0.0650 Ha	951863
Lot 97 Deposited Plan 548207	Fee Simple Title	0.0650 Ha	951864
Lot 98 Deposited Plan 548207	Fee Simple Title	0.0520 Ha	951865
Lot 99 Deposited Plan 548207	Fee Simple Title	0.0520 Ha	951866
Lot 100 Deposited Plan 548207	Fee Simple Title	0.0520 Ha	951867
Lot 101 Deposited Plan 548207	Fee Simple Title	0.0520 Ha	951868
Lot 102 Deposited Plan 548207	Fee Simple Title	0.0520 Ha	951869

Title Plan - LT 548207

Created Parcels

Parcels	Parcel Intent	Area	RT Reference
Lot 103 Deposited Plan 548207	Fee Simple Title	0.0520 Ha	951870
Lot 104 Deposited Plan 548207	Fee Simple Title	0.0649 Ha	951871
Lot 105 Deposited Plan 548207	Fee Simple Title	0.0650 Ha	951872
Lot 106 Deposited Plan 548207	Fee Simple Title	0.0520 Ha	951873
Lot 107 Deposited Plan 548207	Fee Simple Title	0.0520 Ha	951874
Lot 108 Deposited Plan 548207	Fee Simple Title	0.0520 Ha	951875
Lot 109 Deposited Plan 548207	Fee Simple Title	0.0520 Ha	951876
Lot 110 Deposited Plan 548207	Fee Simple Title	0.0520 Ha	951877
Lot 111 Deposited Plan 548207	Fee Simple Title	0.0520 Ha	951878
Lot 112 Deposited Plan 548207	Fee Simple Title	0.0650 Ha	951879
Lot 113 Deposited Plan 548207	Fee Simple Title	0.0650 Ha	951880
Lot 114 Deposited Plan 548207	Fee Simple Title	0.0525 Ha	951881
Lot 115 Deposited Plan 548207	Fee Simple Title	0.0525 Ha	951882
Lot 116 Deposited Plan 548207	Fee Simple Title	0.0525 Ha	951883
Lot 117 Deposited Plan 548207	Fee Simple Title	0.0525 Ha	951884
Lot 118 Deposited Plan 548207	Fee Simple Title	0.0525 Ha	951885
Lot 119 Deposited Plan 548207	Fee Simple Title	0.0525 Ha	951886
Lot 120 Deposited Plan 548207	Fee Simple Title	0.0525 Ha	951887
Lot 123 Deposited Plan 548207	Fee Simple Title	0.0751 Ha	951890
Lot 121 Deposited Plan 548207	Fee Simple Title	0.0525 Ha	951888
Lot 122 Deposited Plan 548207	Fee Simple Title	0.0531 Ha	951889
Lot 124 Deposited Plan 548207	Fee Simple Title	0.0653 Ha	951891
Lot 125 Deposited Plan 548207	Fee Simple Title	0.0499 Ha	951892
Lot 126 Deposited Plan 548207	Fee Simple Title	0.0499 Ha	951893
Lot 127 Deposited Plan 548207	Fee Simple Title	0.0499 Ha	951894
Lot 128 Deposited Plan 548207	Fee Simple Title	0.0499 Ha	951895
Lot 129 Deposited Plan 548207	Fee Simple Title	0.0499 Ha	951896
Lot 130 Deposited Plan 548207	Fee Simple Title	0.0499 Ha	951897
Lot 131 Deposited Plan 548207	Fee Simple Title	0.0650 Ha	951898
Lot 132 Deposited Plan 548207	Fee Simple Title	0.0555 Ha	951899
Lot 133 Deposited Plan 548207	Fee Simple Title	0.0469 Ha	951900
Lot 134 Deposited Plan 548207	Fee Simple Title	0.0469 Ha	951901
Lot 135 Deposited Plan 548207	Fee Simple Title	0.0469 Ha	951902
Lot 136 Deposited Plan 548207	Fee Simple Title	0.0469 Ha	951903
Lot 137 Deposited Plan 548207	Fee Simple Title	0.0469 Ha	951904
Lot 138 Deposited Plan 548207	Fee Simple Title	0.0469 Ha	951905
Lot 139 Deposited Plan 548207	Fee Simple Title	0.0469 Ha	951906
Lot 140 Deposited Plan 548207	Fee Simple Title	0.0469 Ha	951907
Lot 141 Deposited Plan 548207	Fee Simple Title	0.0579 Ha	951908
Lot 142 Deposited Plan 548207	Fee Simple Title	0.0688 Ha	951909
Lot 800 Deposited Plan 548207	Vesting on Deposit for Accessway	0.0650 Ha	
Lot 801 Deposited Plan 548207	Vesting on Deposit for Accessway	0.0627 Ha	

Title Plan - LT 548207

Created Parcels

Parcels	Parcel Intent	Area	RT Reference
Lot 901 Deposited Plan 548207	Vesting on Deposit for Road	1.3711 Ha	
Lot 700 Deposited Plan 548207	Fee Simple Title	0.1079 Ha	951952
Area DE Deposited Plan 548207	Covenant - Land		
Area DD Deposited Plan 548207	Covenant - Land		
Area DC Deposited Plan 548207	Covenant - Land		
Area DB Deposited Plan 548207	Covenant - Land		
Area DA Deposited Plan 548207	Covenant - Land		
Area CY Deposited Plan 548207	Covenant - Land		
Area CZ Deposited Plan 548207	Covenant - Land		
Area CX Deposited Plan 548207	Covenant - Land		
Area CW Deposited Plan 548207	Covenant - Land		
Area CV Deposited Plan 548207	Covenant - Land		
Area CU Deposited Plan 548207	Covenant - Land		
Area CT Deposited Plan 548207	Covenant - Land		
Area CS Deposited Plan 548207	Covenant - Land		
Area CR Deposited Plan 548207	Covenant - Land		
Area CQ Deposited Plan 548207	Covenant - Land		
Area CP Deposited Plan 548207	Covenant - Land		
Area CO Deposited Plan 548207	Covenant - Land		
Area CN Deposited Plan 548207	Covenant - Land		
Area CM Deposited Plan 548207	Covenant - Land		
Area CA Deposited Plan 548207	Covenant - Land		
Area CB Deposited Plan 548207	Covenant - Land		
Area CC Deposited Plan 548207	Covenant - Land		
Area CD Deposited Plan 548207	Covenant - Land		
Area CE Deposited Plan 548207	Covenant - Land		
Area CF Deposited Plan 548207	Covenant - Land		
Area CG Deposited Plan 548207	Covenant - Land		
Area CH Deposited Plan 548207	Covenant - Land		
Area CI Deposited Plan 548207	Covenant - Land		
Area CJ Deposited Plan 548207	Covenant - Land		
Area CK Deposited Plan 548207	Covenant - Land		
Area CL Deposited Plan 548207	Covenant - Land		
Area BT Deposited Plan 548207	Covenant - Land		
Area BU Deposited Plan 548207	Covenant - Land		
Area BV Deposited Plan 548207	Covenant - Land		
Area BW Deposited Plan 548207	Covenant - Land		
Area BX Deposited Plan 548207	Covenant - Land		
Area BY Deposited Plan 548207	Covenant - Land		
Area BZ Deposited Plan 548207	Covenant - Land		
Area DF Deposited Plan 548207	Covenant - Land		
Area DG Deposited Plan 548207	Covenant - Land		
Area DH Deposited Plan 548207	Covenant - Land		

Title Plan - LT 548207

Created Parcels

Parcels	Parcel Intent	Area	RT Reference
Area DI Deposited Plan 548207	Covenant - Land		
Area DJ Deposited Plan 548207	Covenant - Land		
Area DK Deposited Plan 548207	Covenant - Land		
Area DL Deposited Plan 548207	Covenant - Land		
Area DM Deposited Plan 548207	Covenant - Land		
Area DN Deposited Plan 548207	Covenant - Land		
Area DO Deposited Plan 548207	Covenant - Land		
Area DP Deposited Plan 548207	Covenant - Land		
Area DQ Deposited Plan 548207	Covenant - Land		
Area DR Deposited Plan 548207	Covenant - Land		
Area DS Deposited Plan 548207	Covenant - Land		
Area HQ Deposited Plan 548207	Covenant - Land		
Area DU Deposited Plan 548207	Covenant - Land		
Area DV Deposited Plan 548207	Covenant - Land		
Area DW Deposited Plan 548207	Covenant - Land		
Area DX Deposited Plan 548207	Covenant - Land		
Lot 501 Deposited Plan 548207	Vesting on Deposit for Local Purpose Reserve	0.3630 Ha	951950
Marginal Strip II Deposited Plan 548207	Marginal Strip - Movable		
Marginal Strip HH Deposited Plan 548207	Marginal Strip - Movable		
Lot 502 Deposited Plan 548207	Vesting on Deposit for Local Purpose Reserve	0.9546 Ha	951951
Area HR Deposited Plan 548207	Covenant - Land		
Area DT Deposited Plan 548207	Covenant - Land		
Area HS Deposited Plan 548207	Covenant - Land		
Area HT Deposited Plan 548207	Covenant - Land		
Area HU Deposited Plan 548207	Covenant - Land		
Area HV Deposited Plan 548207	Covenant - Land		
Area HW Deposited Plan 548207	Covenant - Land		
Area HX Deposited Plan 548207	Covenant - Land		
Area HY Deposited Plan 548207	Covenant - Land		
Area HZ Deposited Plan 548207	Covenant - Land		
Area GA Deposited Plan 548207	Covenant - Land		
Area GB Deposited Plan 548207	Covenant - Land		
Area GC Deposited Plan 548207	Covenant - Land		
Area GD Deposited Plan 548207	Covenant - Land		
Area GE Deposited Plan 548207	Covenant - Land		
Area GF Deposited Plan 548207	Covenant - Land		
Area GG Deposited Plan 548207	Covenant - Land		
Area GH Deposited Plan 548207	Covenant - Land		
Area GI Deposited Plan 548207	Covenant - Land		



Title Plan - LT 548207

Created Parcels

Parcels	Parcel Intent	Area	RT Reference
Area A Deposited Plan 548207	Easement		
Total Area		<hr/> 6.4654 Ha	

Schedule / Memorandum

Land Registration District

North Auckland

Survey Number

LT 548207

Territorial Authority (the Council)

Auckland Council

Schedule of Existing Easements in Gross

Last Edited: 28 Aug 2020 12:20:20

<u>Purpose</u>	<u>Shown</u>	<u>Servient Tenement (Burdened Land)</u>	<u>Creating Document Reference</u>
Right to convey electricity	A	Lot 502	EI 11830488.1

Notes

Last Edited: 31 Aug 2020 08:58:21

Area A was previously captured as Area A DP 552083

Land Covenants:

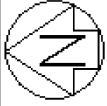
Areas DF to DX are subject to Land Covenants

Areas BT to BZ, CA to CZ and DA to DE are subject to Land Covenants

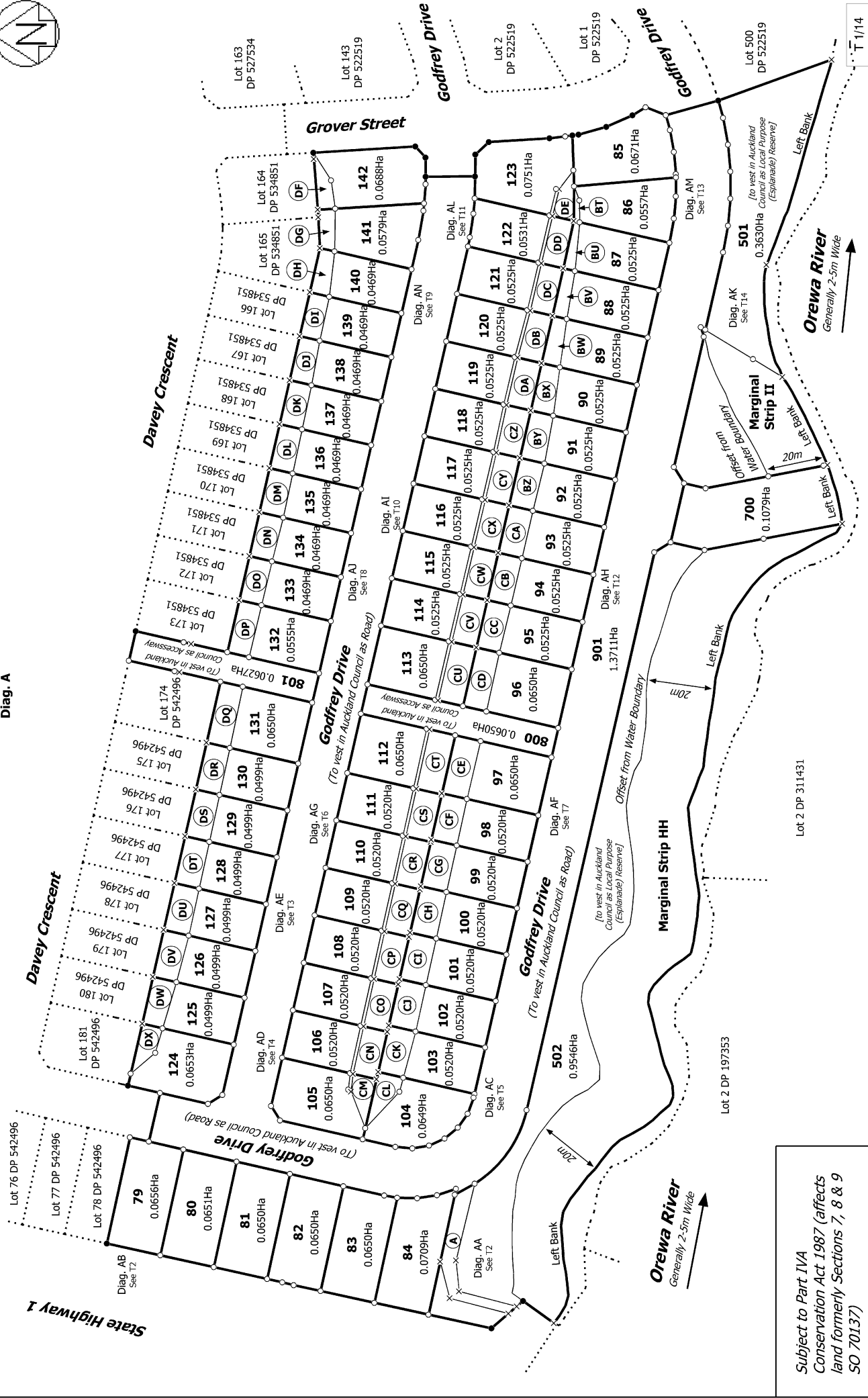
Areas HQ to HZ and GA to GI are subject to Land Covenants

Note:

Land formerly Sections 7, 8 & 9 SO 70137 is Subject to Part 4A of the Conservation Act 1987.



Diag. A



Subject to Part IVA
 Conservation Act 1987 (affects
 land formerly Sections 7, 8 & 9
 SO 70137)

Land District: North Auckland

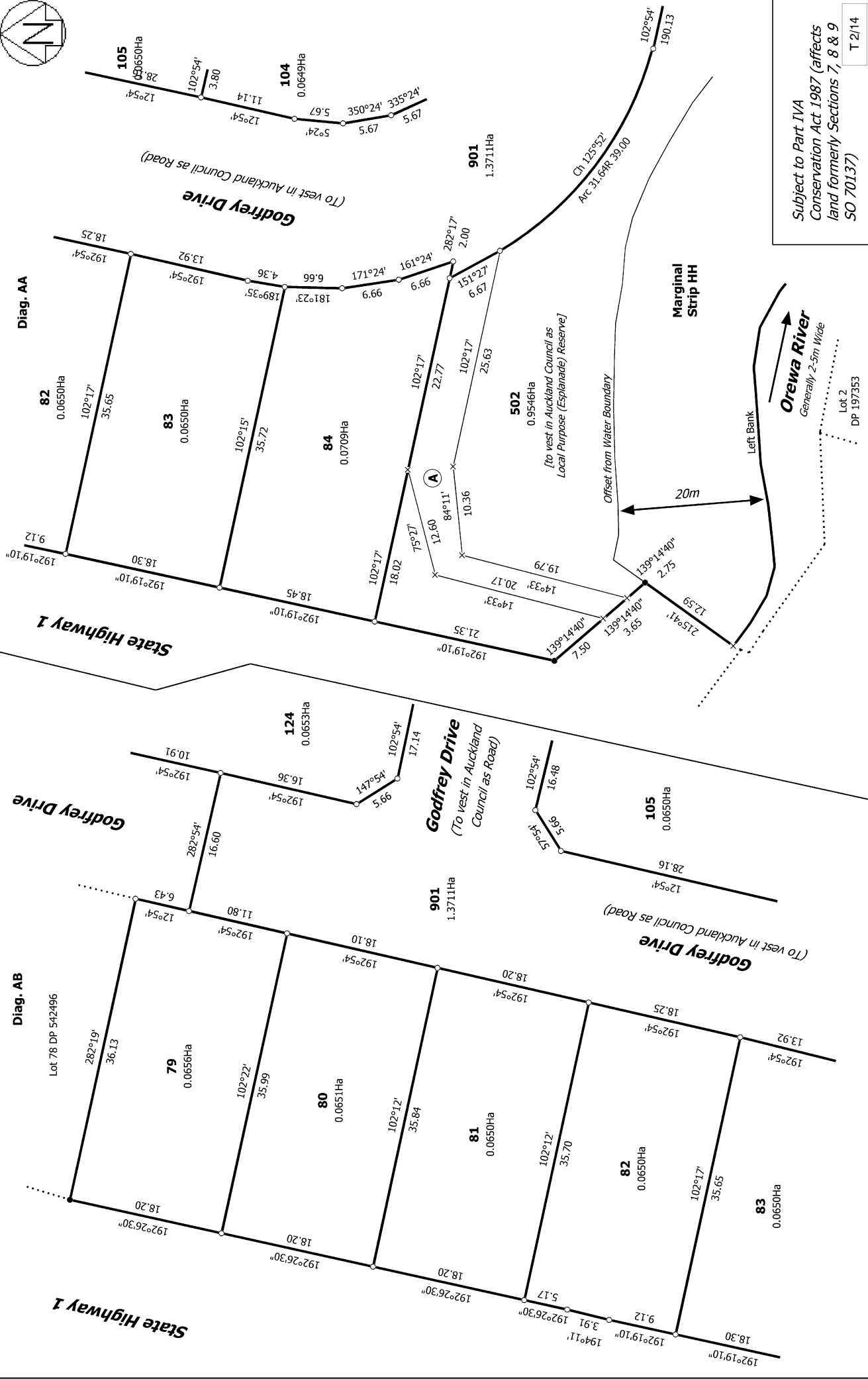
Digitally Generated Plan
 Generated on: 01/09/2020 09:41:01 Page 7 of 20

Lots 79-142, 501-502, 700, 800-801 & 901 Being a subdivision of Lot 1001 DP
 542496

Surveyor: Kendall Lisa Reid
 Firm: Wood & Partners Consultants Ltd

Title Plan
 LT 548207
 DRAFT

T 1/14



Subject to Part IVA
Conservation Act 1987 (affects
land formerly Sections 7, 8 & 9
SO 70137)

T 2/14

Title Plan
LT 548207
DRAFT

Surveyor: Kendall Lisa Reid
Firm: Wood & Partners Consultants Ltd

Lots 79-142, 501-502, 700, 800-801 & 901 Being a subdivision of Lot 1001 DP
542496

Land District: North Auckland
Digitally Generated Plan
Generated on: 07/09/2020 09:41:am Page 8 of 20

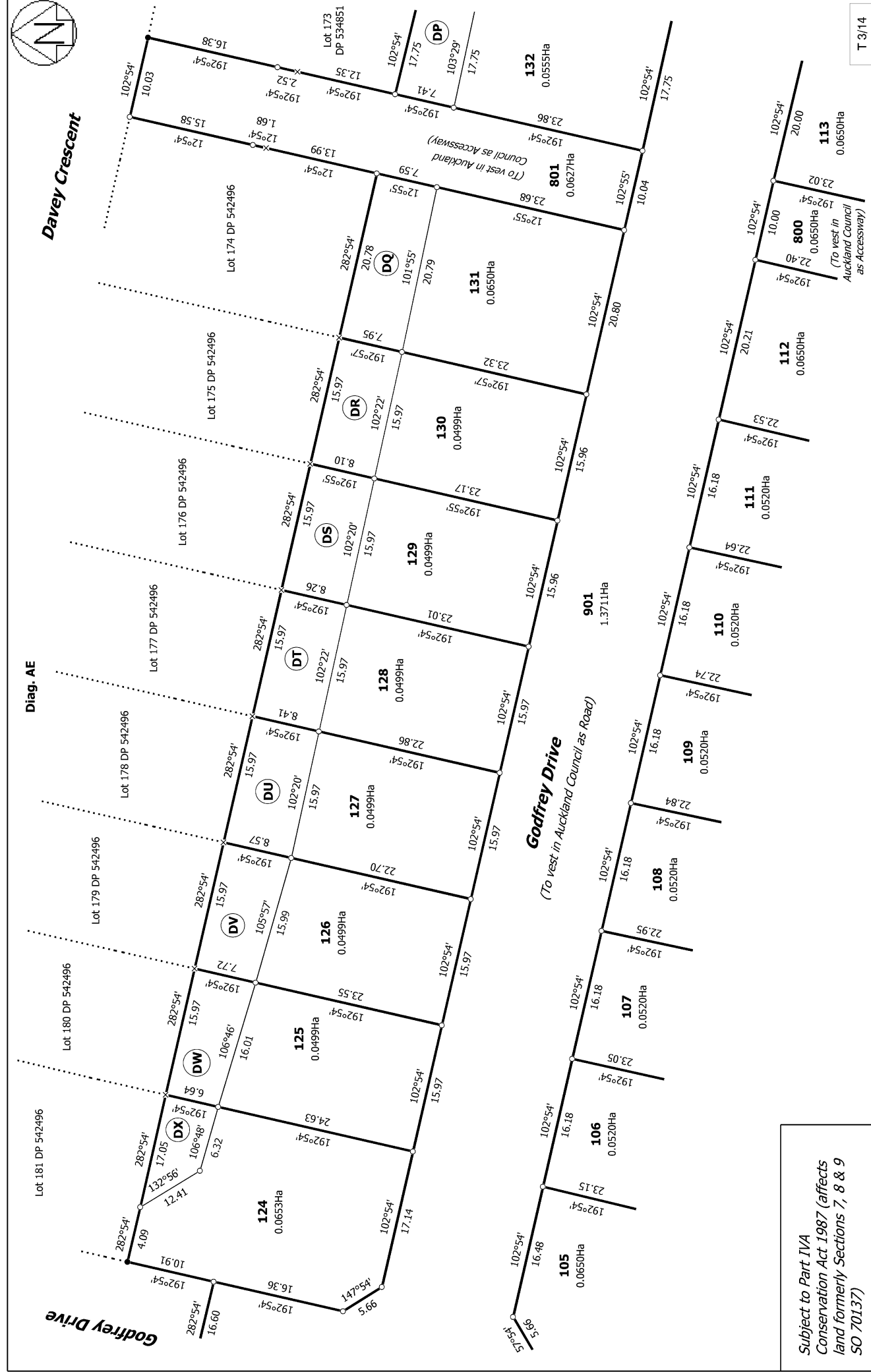


Davey Crescent

Diag. AE

Godfrey Drive

Godfrey Drive
(To vest in Auckland Council as Road)



T 3/14

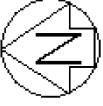
Title Plan
LT 548207
DRAFT

Surveyor: Kendall Lisa Reid
Firm: Wood & Partners Consultants Ltd

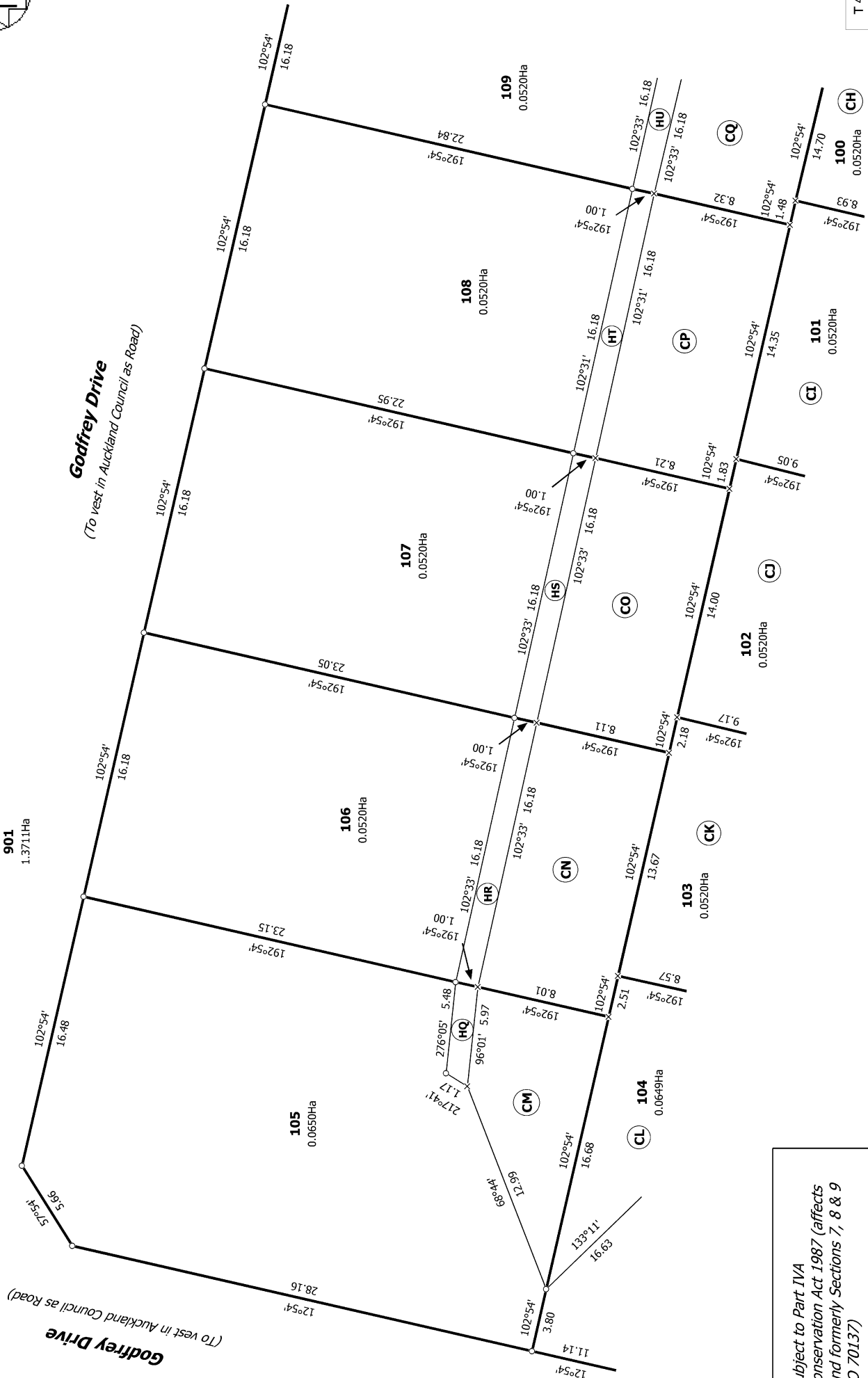
Lots 79-142, 501-502, 700, 800-801 & 901 Being a subdivision of Lot 1001 DP 542496

Land District: North Auckland
Digitally Generated Plan
Generated on: 01/09/2020 09:41:am Page 9 of 20

*Subject to Part IVA
Conservation Act 1987 (affects
land formerly Sections 7, 8 & 9
SO 70137)*



Diag. AD



T 4/14

Title Plan
LT 548207
DRAFT

Surveyor: Kendall Lisa Reid
Firm: Wood & Partners Consultants Ltd

Lots 79-142, 501-502, 700, 800-801 & 901 Being a subdivision of Lot 1001 DP
542496

Subject to Part IVA
Conservation Act 1987 (affects
land formerly Sections 7, 8 & 9
SO 70137)

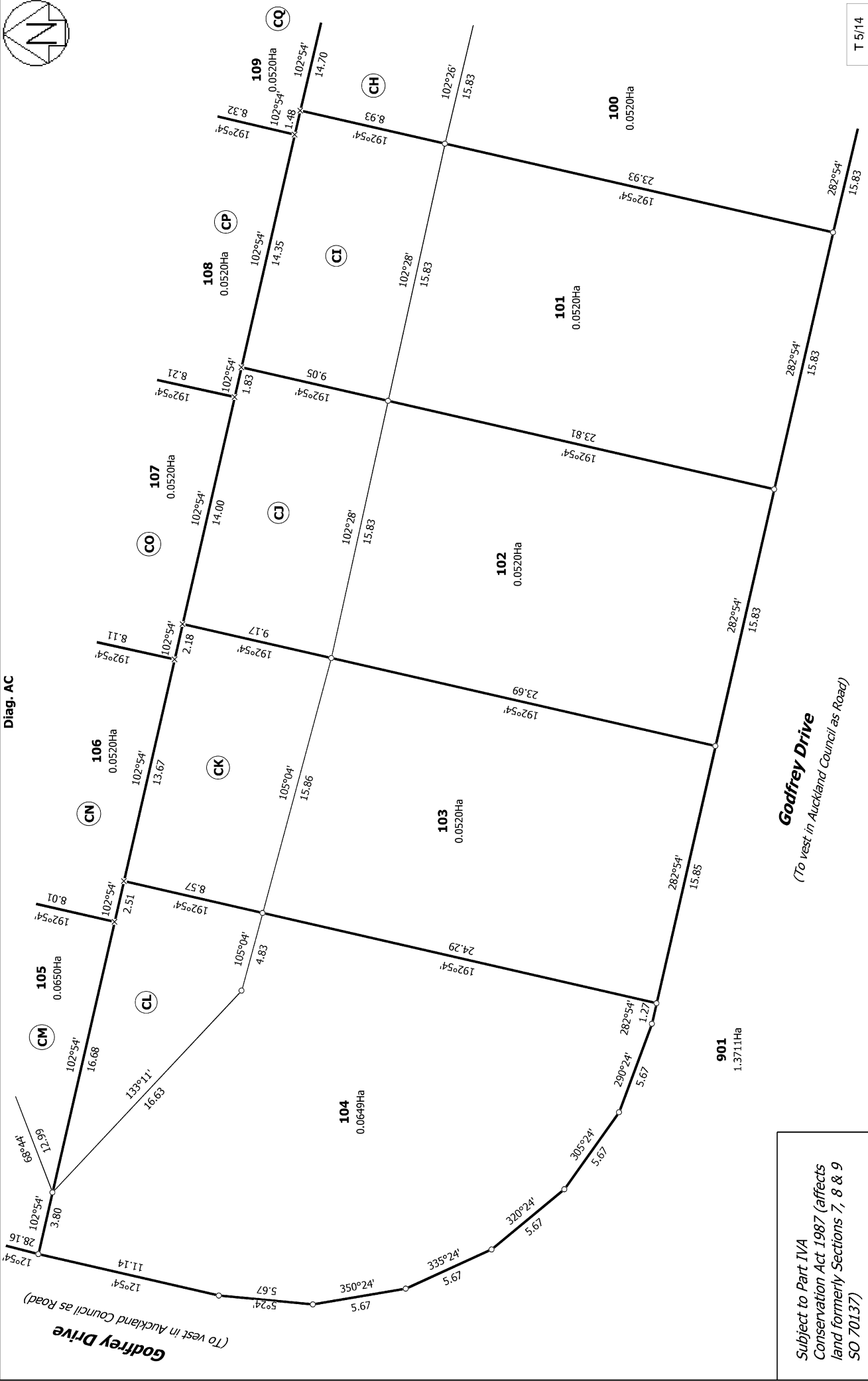
Land District: North Auckland

Digitally Generated Plan

Generated on: 01/09/2020 09:41:01 Page 10 of 20



Diag. AC



T 5/14

Title Plan
LT 548207
DRAFT

Surveyor: Kendall Lisa Reid
Firm: Wood & Partners Consultants Ltd

Lots 79-142, 501-502, 700, 800-801 & 901 Being a subdivision of Lot 1001 DP
542496

Land District: North Auckland

Digitally Generated Plan
Generated on: 01/09/2020 09:41:00 Page 11 of 20

Subject to Part IVA
Conservation Act 1987 (affects
land formerly Sections 7, 8 & 9
SO 70137)

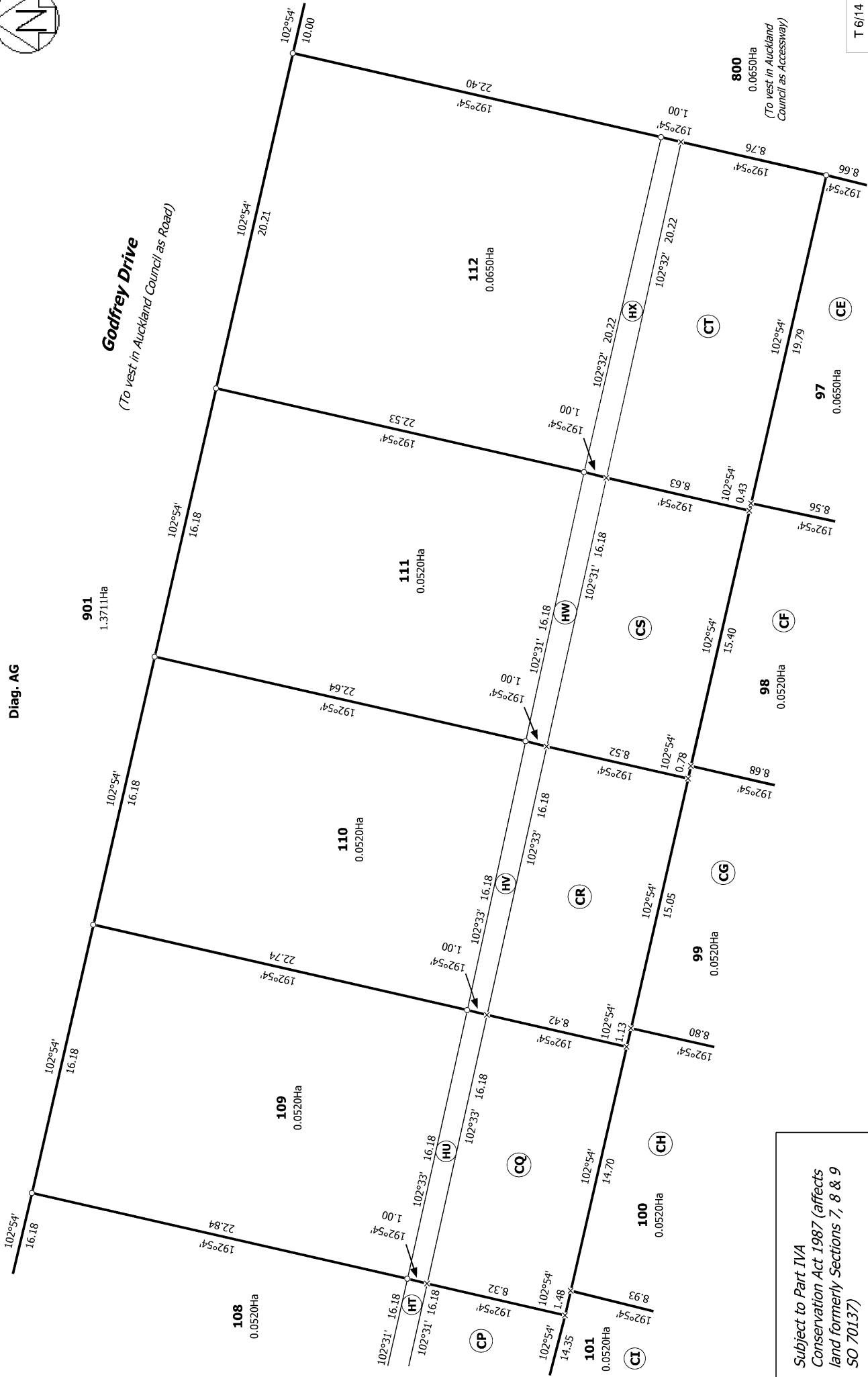
Godfrey Drive
(To vest in Auckland Council as Road)



Diag. AG

Godfrey Drive

(To vest in Auckland Council as Road)



Subject to Part IVA
 Conservation Act 1987 (affects
 land formerly Sections 7, 8 & 9
 SO 70137)

Land District: North Auckland

Digitally Generated Plan

Generated on: 01/09/2020 09:41:01 Page 12 of 20

Lots 79-142, 501-502, 700, 800-801 & 901 Being a subdivision of Lot 1001 DP

542496

Surveyor: Kendall Lisa Reid

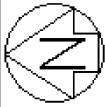
Firm: Wood & Partners Consultants Ltd

Title Plan

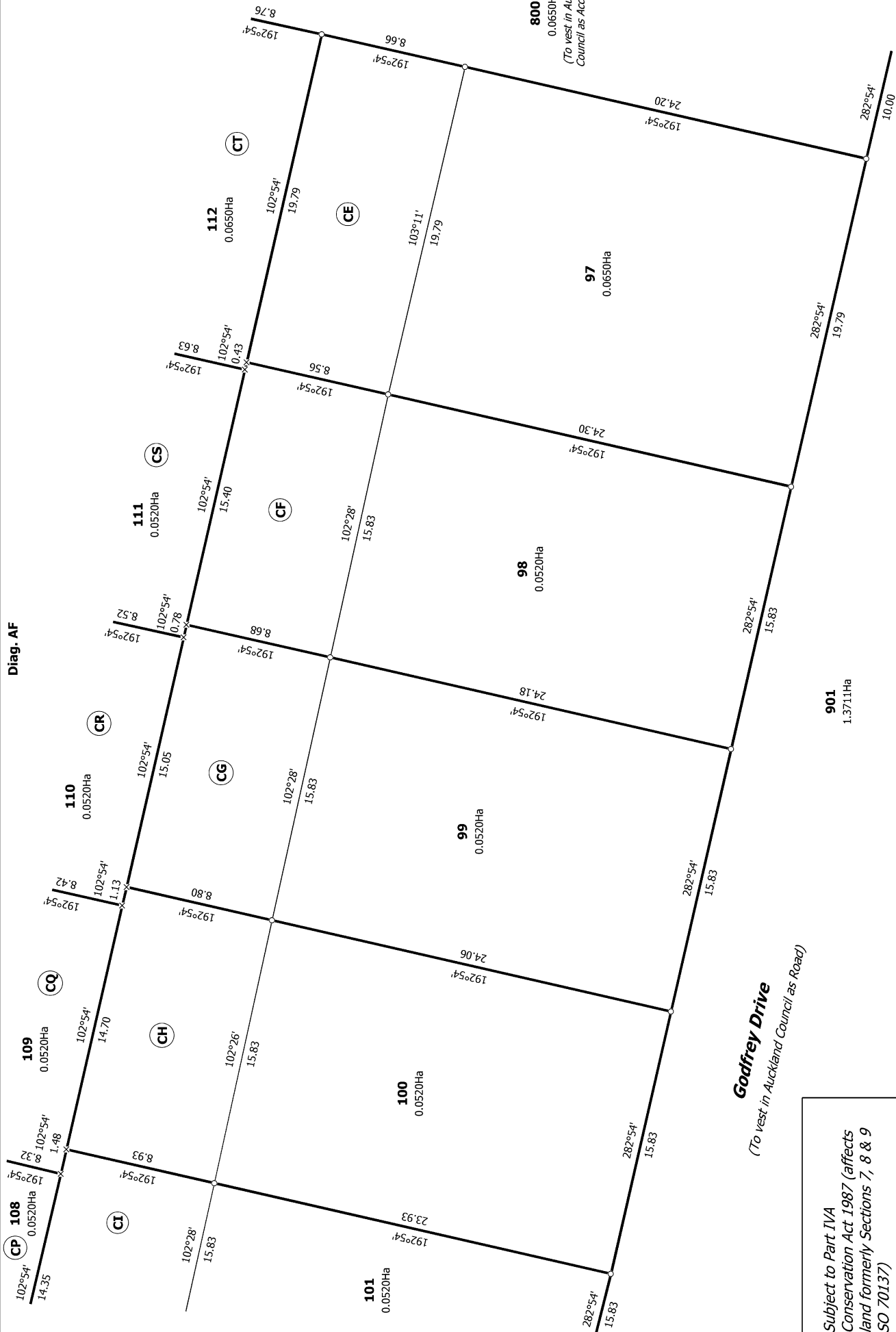
LT 548207

DRAFT

T 6/14



Diag. AF



T 7/14

Godfrey Drive
(To vest in Auckland Council as Road)

Subject to Part IVA
Conservation Act 1987 (affects
land formerly Sections 7, 8 & 9
SO 70137)

Land District: North Auckland

Digitally Generated Plan

Generated on: 01/09/2020 09:41:01 AM Page 13 of 20

Lots 79-142, 501-502, 700, 800-801 & 901 Being a subdivision of Lot 1001 DP

542496

Surveyor: Kendall Lisa Reid
Firm: Wood & Partners Consultants Ltd

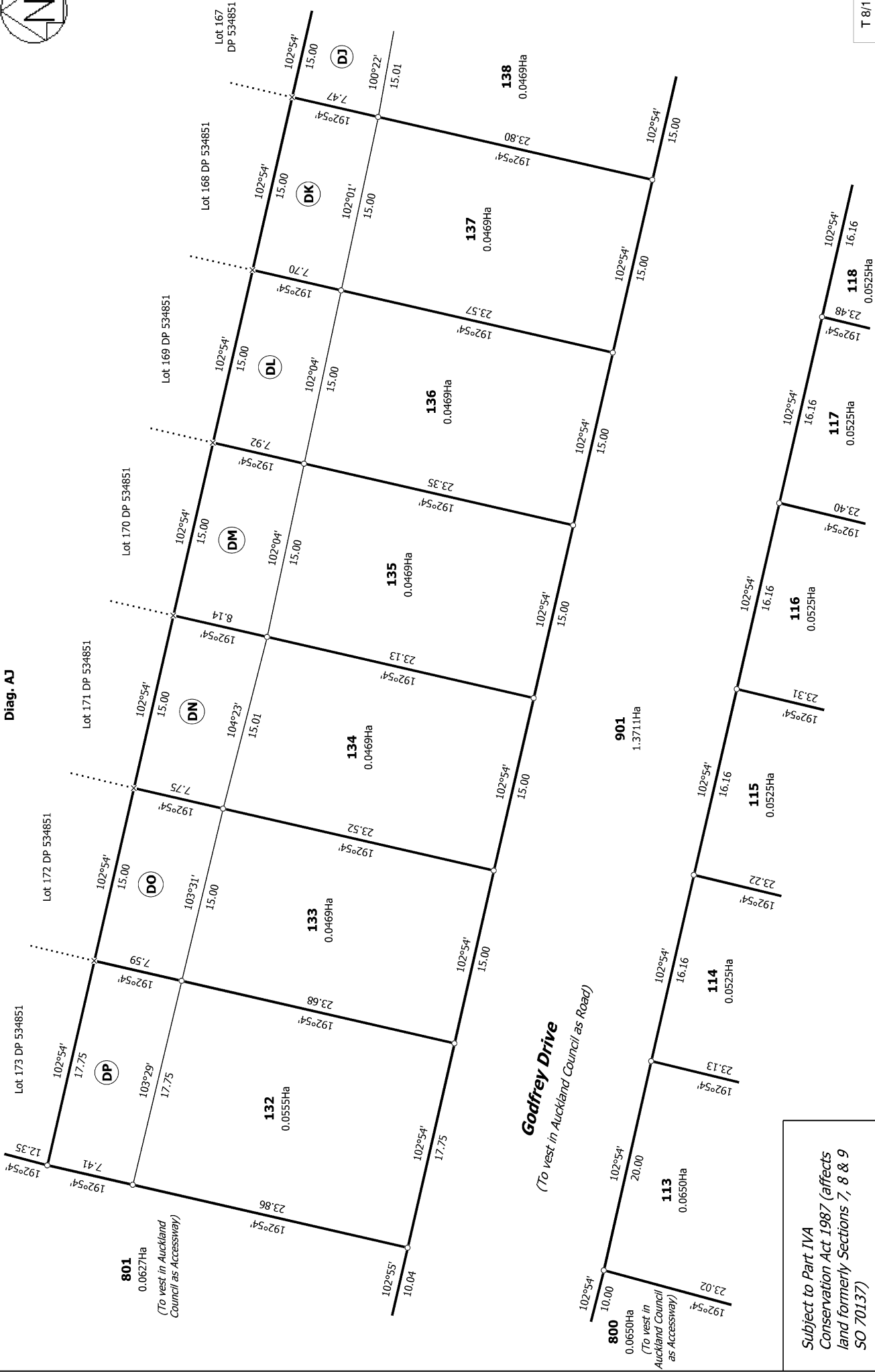
Title Plan

LT 548207

DRAFT



Diag. AJ



T 8/14

Subject to Part IVA
Conservation Act 1987 (affects
land formerly Sections 7, 8 & 9
SO 70137)

Land District: North Auckland

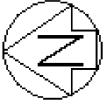
Digitally Generated Plan

Generated on: 01/09/2020 09:41:01 Page 14 of 20

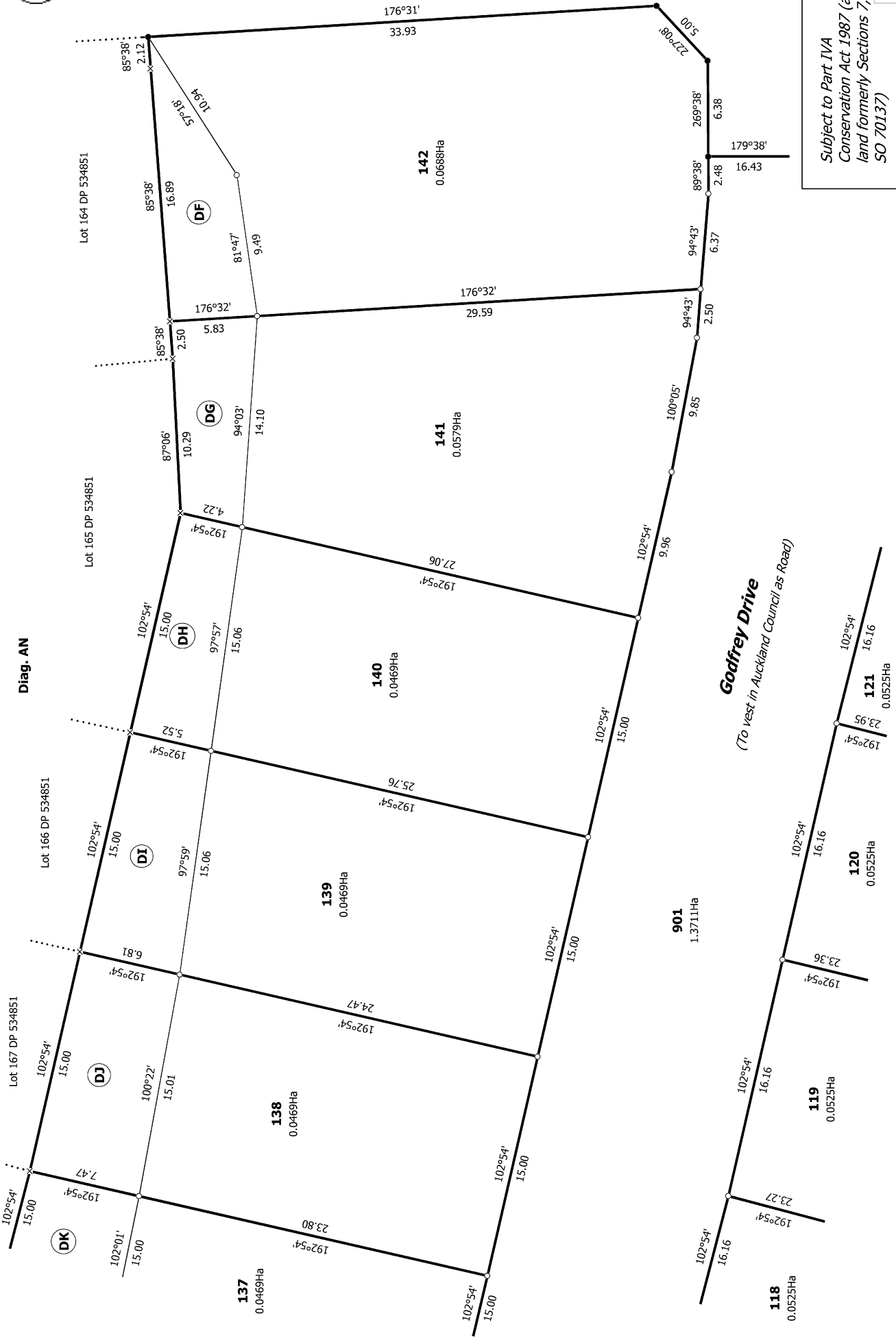
Lots 79-142, 501-502, 700, 800-801 & 901 Being a subdivision of Lot 1001 DP 542496

Surveyor: Kendall Lisa Reid
Firm: Wood & Partners Consultants Ltd

Title Plan
LT 548207
DRAFT



Grover Street



Godfrey Drive
(To vest in Auckland Council as Road)

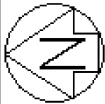
Subject to Part IVA
Conservation Act 1987 (affects
land formerly Sections 7, 8 & 9
SO 70137)

Title Plan
LT 548207
DRAFT

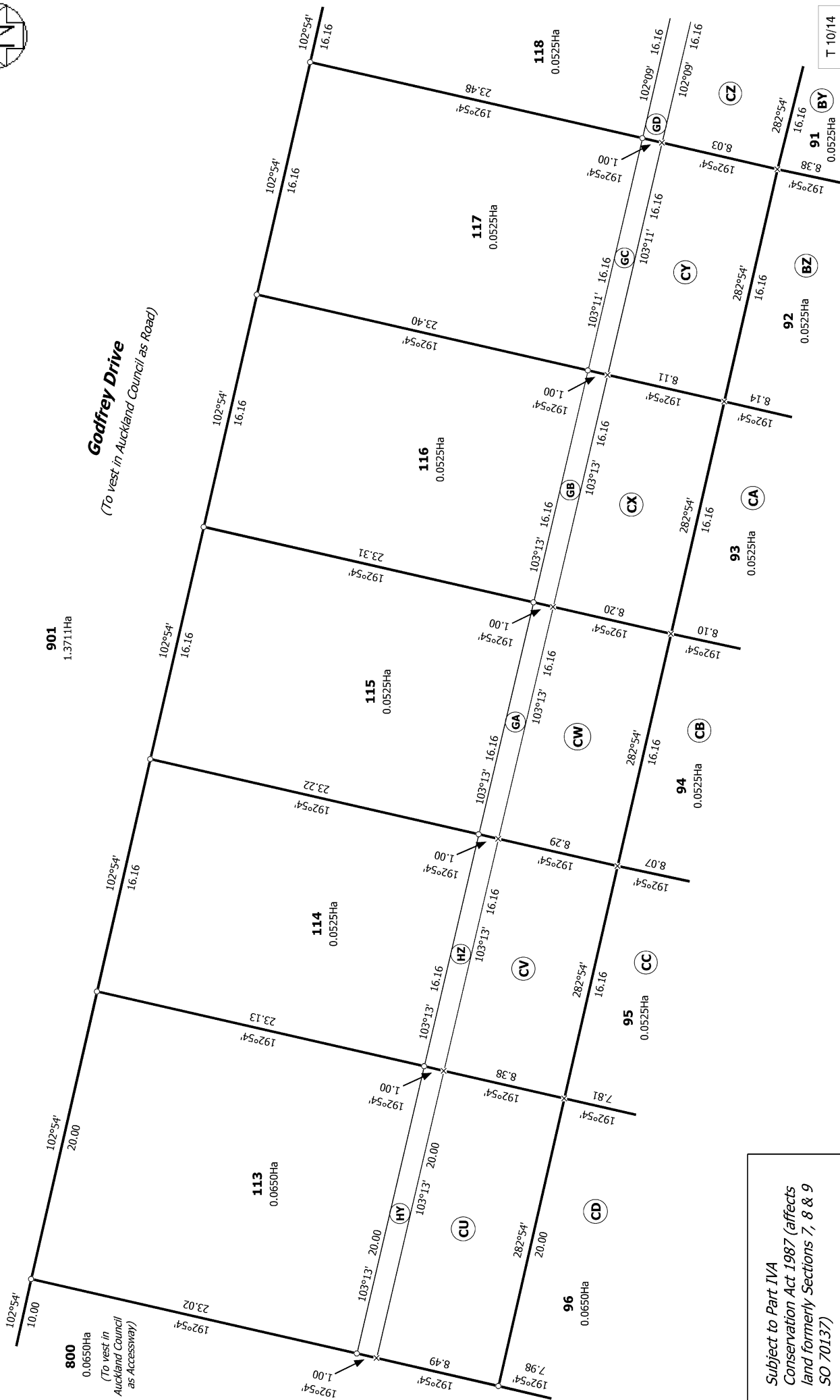
Surveyor: Kendall Lisa Reid
Firm: Wood & Partners Consultants Ltd

Lots 79-142, 501-502, 700, 800-801 & 901 Being a subdivision of Lot 1001 DP
542496

Land District: North Auckland
Digitally Generated Plan
Generated on: 01/09/2020 09:41:am Page 15 of 20



Diag. AI



T 10/14

Title Plan
LT 548207
DRAFT

Surveyor: Kendall Lisa Reid
Firm: Wood & Partners Consultants Ltd

Lots 79-142, 501-502, 700, 800-801 & 901 Being a subdivision of Lot 1001 DP
542496

*Subject to Part IVA
Conservation Act 1987 (affects
land formerly Sections 7, 8 & 9
SO 70137)*

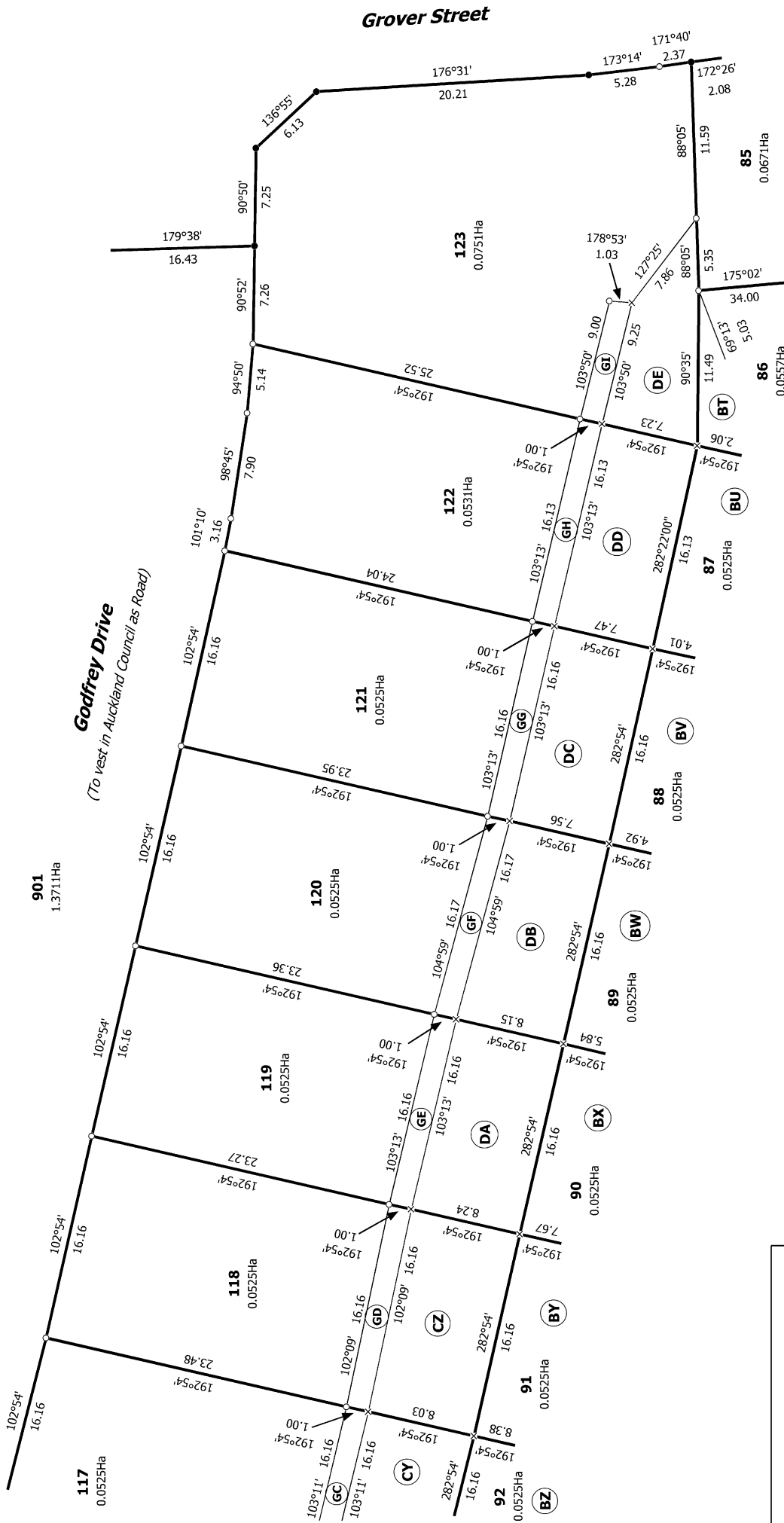
Land District: North Auckland

Digitally Generated Plan

Generated on: 07/09/2020 09:41:01 Page 16 of 20



Diag. AL



T 11/14

Title Plan
LT 548207
DRAFT

Surveyor: Kendall Lisa Reid
Firm: Wood & Partners Consultants Ltd

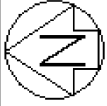
Lots 79-142, 501-502, 700, 800-801 & 901 Being a subdivision of Lot 1001 DP
542496

Subject to Part IVA
Conservation Act 1987 (affects
land formerly Sections 7, 8 & 9
SO 70137)

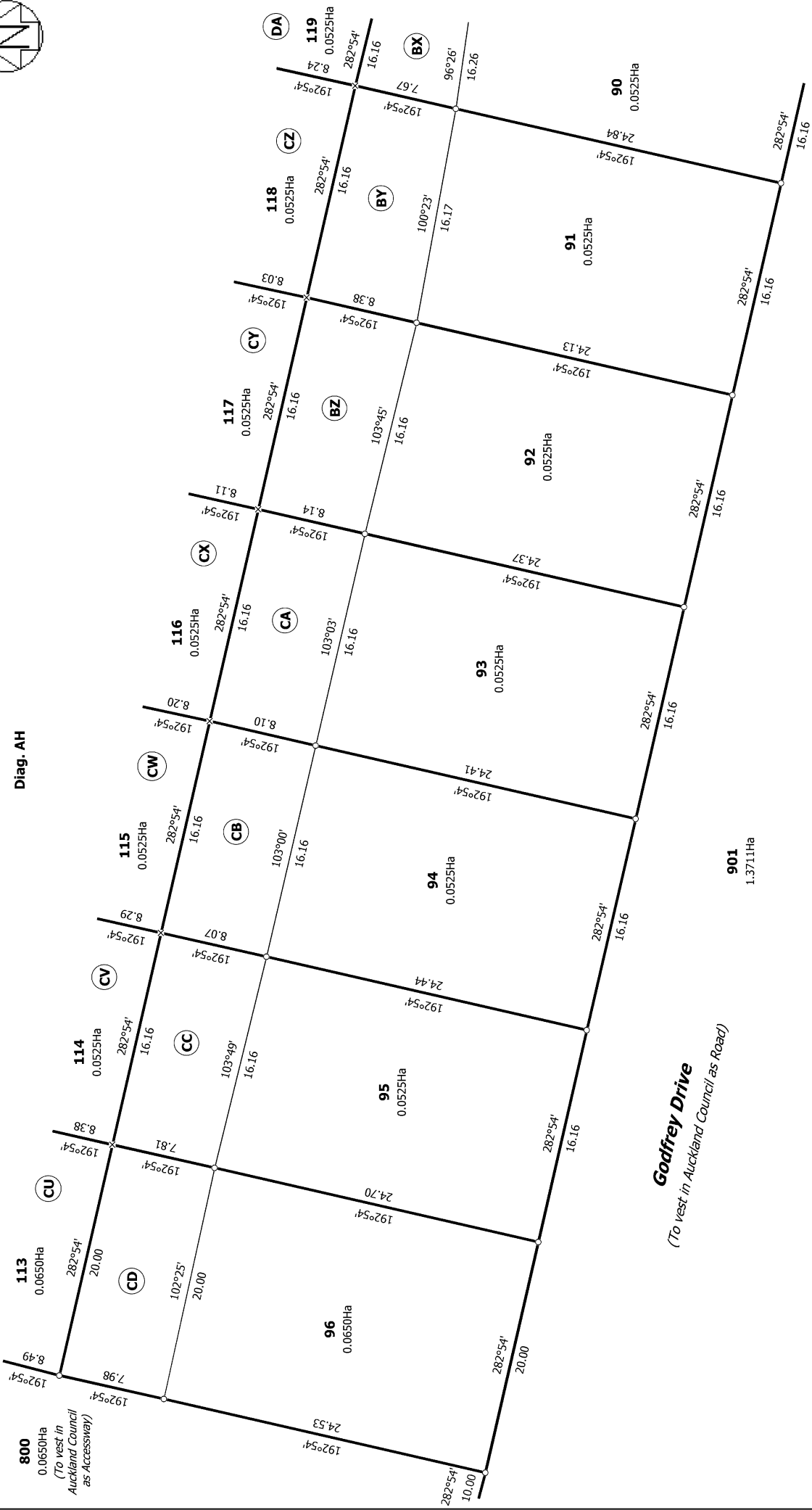
Land District: North Auckland

Digitally Generated Plan

Generated on: 01/09/2020 09:41:01 Page 17 of 20



Diag. AH



T 12/14

Subject to Part IVA
Conservation Act 1987 (affects
land formerly Sections 7, 8 & 9
SO 70137)

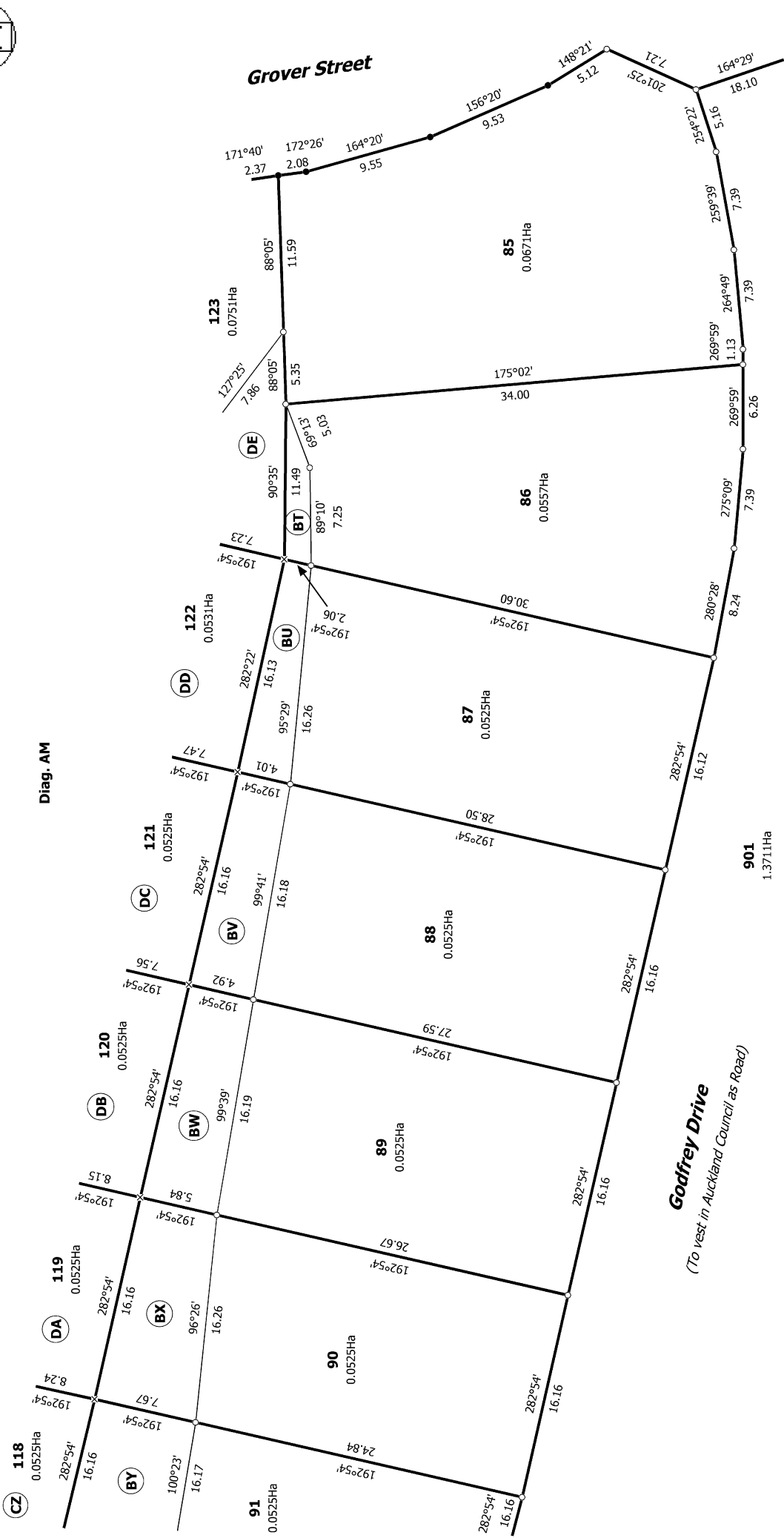
Land District: North Auckland

Digitally Generated Plan
Generated on: 01/09/2020 09:41:01 Page 18 of 20

Surveyor: Kendall Lisa Reid
Firm: Wood & Partners Consultants Ltd

Title Plan
LT 548207
DRAFT

Lots 79-142, 501-502, 700, 800-801 & 901 Being a subdivision of Lot 1001 DP
542496



T 13/14	Title Plan LT 548207 DRAFT	Surveyor: Kendall Lisa Reid Firm: Wood & Partners Consultants Ltd	Lots 79-142, 501-502, 700, 800-801 & 901 Being a subdivision of Lot 1001 DP 542496	<p>Subject to Part IVA Conservation Act 1987 (affects land formerly Sections 7, 8 & 9 SO 70137)</p> <p>Land District: North Auckland</p> <p>Digitally Generated Plan Generated on: 01/09/2020 09:41:am Page 19 of 20</p>
---------	----------------------------------	--	---	---

*Subject to Part IVA
Conservation Act 1987 (affects
land formerly Sections 7, 8 & 9
SO 70137)*



Diag. AKA

Godfrey Drive
(To vest in Auckland Council as Road)

901
1.3711Ha

102°54'

44.45

207°02'

1.74

211°20'

20.15

72°23'

3.33

501
0.3630Ha
*[to vest in Auckland Council as
Local Purpose (Esplanade) Reserve]*

Offset from Water Boundary

Marginal Strip II

Diag. AK

Godfrey Drive
(To vest in Auckland Council as Road)

102°54'

190.13

147°54'

6.36

192°54'

11.57

00.20

169°10'

26.57

502
0.9546Ha
*[to vest in Auckland
Council as Local Purpose
(Esplanade) Reserve]*

Offset from Water Boundary

Marginal Strip HH

20m

Left Bank

169°10'

18.71

21.20

121°49'

6.36

57°54'

7.34

192°54'

20.10

102°54'00"

20.10

102°54'

44.45

211°20'

11.40

20.15

Marginal Strip II

Offset from Water Boundary

Left Bank

102°54'

26.35

100°19'

9.00

9.00

100°19'

9.00

95°09'

9.00

89°59'

9.00

84°49'

9.00

79°39'

9.00

74°22'

6.00

164°29'

18.10

501

0.3630Ha

*[to vest in Auckland Council as
Local Purpose (Esplanade) Reserve]*

Orewa River
Generally 2-5m Wide

Lot 2 DP 311431

Left Bank

169°10'

1.30

21°20'

11.40

21°20'

11.40

21°20'

20.15

102°54'

26.35

901

1.3711Ha

Diag. AKA
See T14

340°10'

40.07

Lot 500
DP 522519

T 14/14

Land District: North Auckland

Digitally Generated Plan
Generated on: 01/09/2020 09:41:01 am Page 20 of 20

**Lots 79-142, 501-502, 700, 800-801 & 901 Being a subdivision of Lot 1001 DP
542496**

Surveyor: Kendall Lisa Reid
Firm: Wood & Partners Consultants Ltd

**Title Plan
LT 548207
DRAFT**